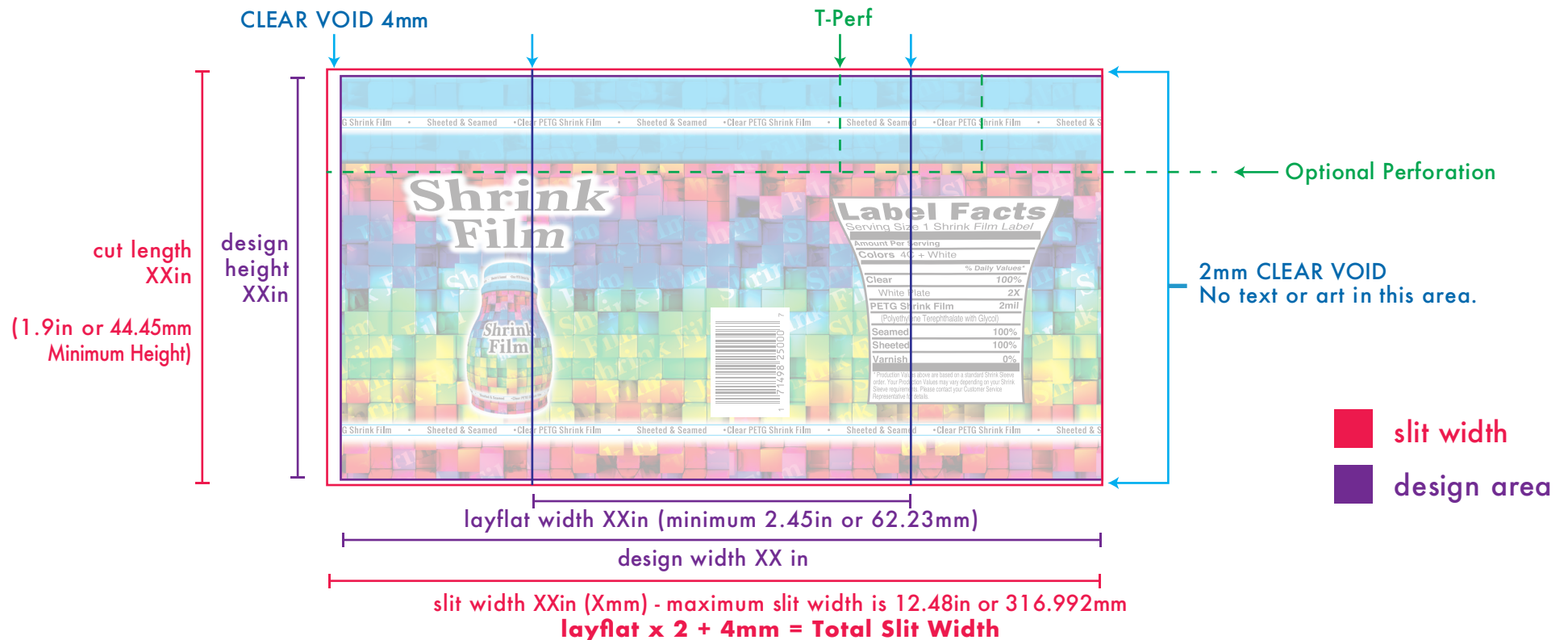


shrink film Specifications



- **Slit width:** The total width of a shrink sleeve before it is seamed.
- **Layflat width:** Is the width of the seamed shrink sleeve or the width of the finished product, which is half of the of design width.
Minimum Lay Flat Width: 2.45in (62.23 mm)
- **Design Width:** Art should be placed within this area.
- **Cut Length:** Minimum Height 1.9in (44.45)
- **Clear Void:** This area should be left empty (no ink in this area). It acts as an eymeark for the sheeting process.
- **Bar-codes:** Typically should be placed vertically (see example above), depending on container.
- **Perforation: (optional)** Optional, specify on your artwork wether it is needed for your product, ask your bottling facility for these specs. T-Perfs are also available.
- **T-Perf: (optional)** Optional, die purchase normally required, ask your CSR for details.

